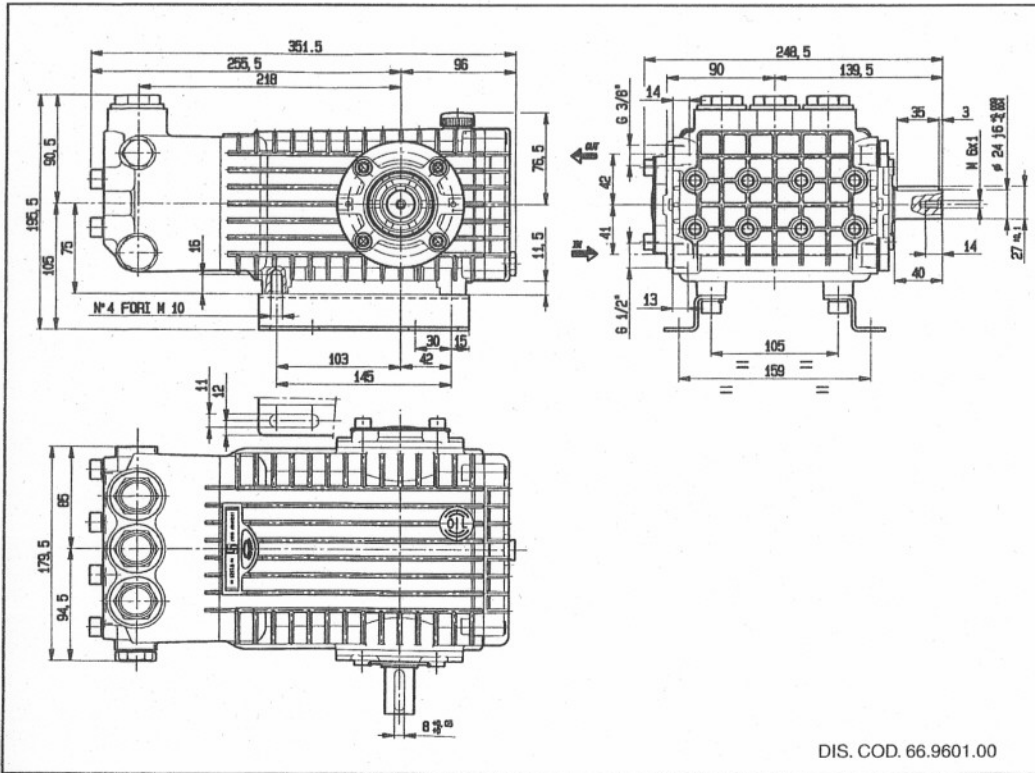


■ OVERALL DIMENSIONS ■ ÄUSSERE ABMESSUNGEN ■ DIMENSIONS TOTALES
 ■ DIMENSIONES TOTALES ■ DIMENSIONI D'INGOMBRO



- LUBRICATION: Check the oil from time. Change the oil after 50 Hrs. operation and then after every 500 Hrs. We recommend INTERPUMP OIL X-9.9. (SAE 15W40 Mineral) - OIL CAPACITY / 1,2.
- SCHMIERUNG: Der Ölstand ist in regelmässigen Abständen zu kontrollieren. Der Ölwechsel muss nach den ersten 50 Arbeitsstunden, in der Folge alle 500 Stunden, vorgenommen werden. Es sollte INTERPUMP ÖL X-9.9 (SAE 15W40 Mineral) verwendet werden - Ölinhalt 1,2 l.
- LUBRIFICATION: Contrôler régulièrement le niveau d'huile. La première vidange doit être faite au bout de 50 heures maximum, ensuite faire une vidange toutes les 500 heures, on conseille huile INTERPUMP X-9.9. (SAE 15W40 Minérale) - CAPACITÉ D'HUILE 1,2 l.
- LUBRIFICACIÓN: Controlar periódicamente el nivel del aceite. El cambio del aceite, al comienzo, hay que hacerlo después de 50 horas de trabajo, luego cada 500 horas. Se aconseja aceite INTERPUMP X-9.9. (SAE 15W40 Mineral) - CAPACIDAD 1,2 l.
- LUBRIFICAZIONE: Controllare periodicamente il livello dell'olio. Il cambio dell'olio deve essere fatto inizialmente dopo 50 ore di lavoro, successivamente ogni 500 ore. Si consiglia olio INTERPUMP X-9.9. (SAE 15W40 Minerale) - CAPACITÀ OLIO 1,2 l.



INTERPUMP GROUP

VIA E. FERMI, 25
 42040 S. ILARIO - REGGIO EMILIA (ITALY)
 TEL. +39 - 0522 - 904311 • TELEFAX + 39 - 0522 - 904444
 E-mail: info@interpumpgroup.it
 http://www.interpumpgroup.it

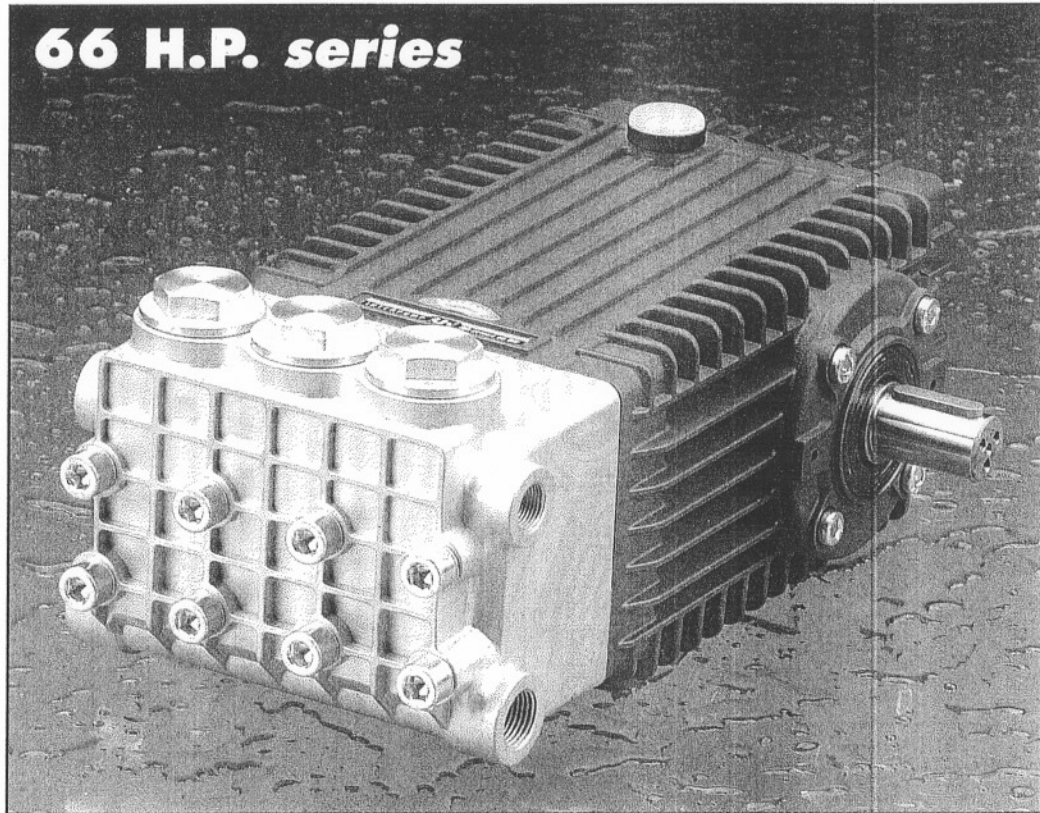
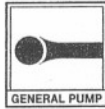
Revisión 4

Cod. 66.9601.00 - 07/06 - 500

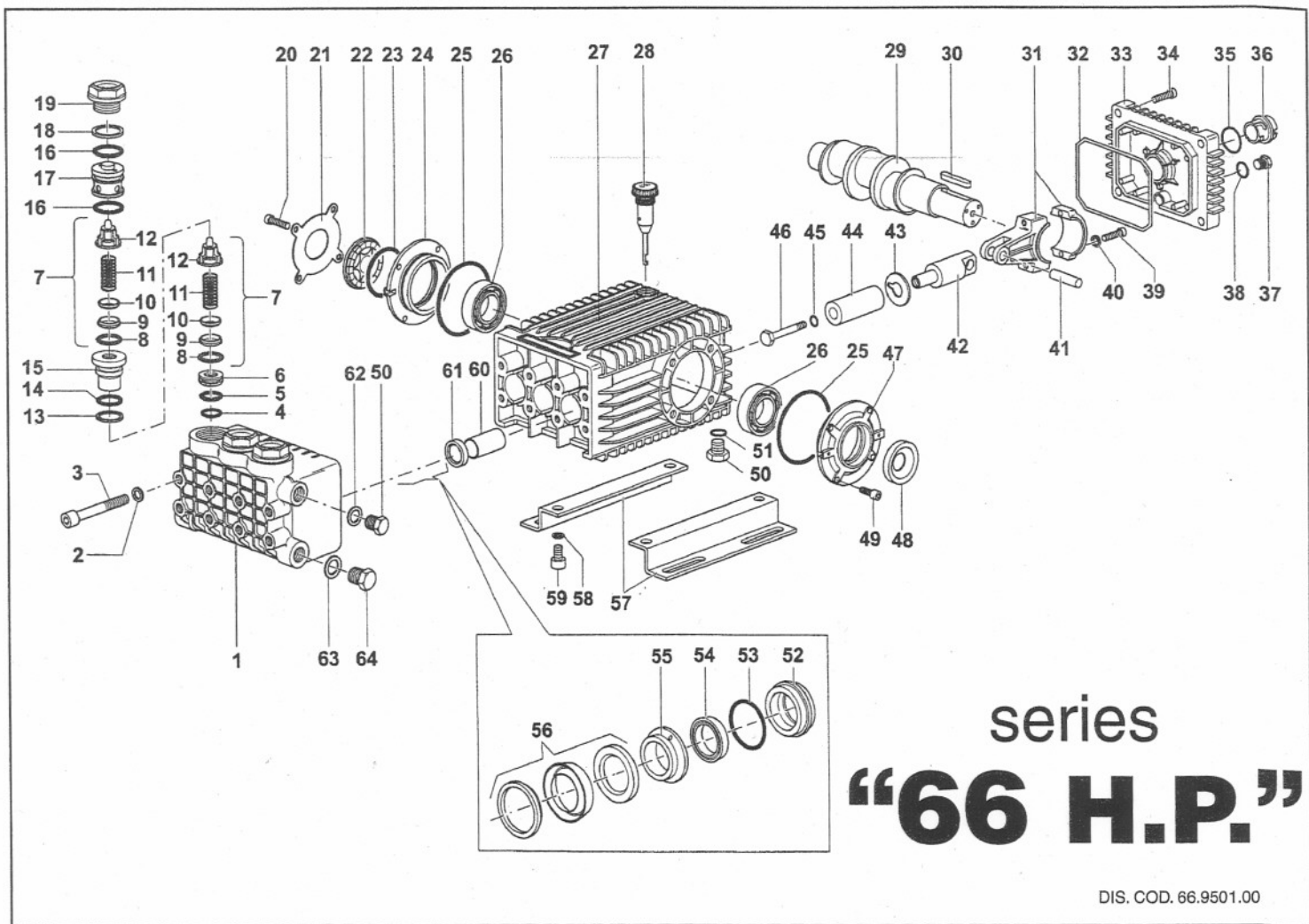


INTERPUMP GROUP

INTERNATIONAL TECHNICAL COMPANY



Pump type	Volume Leistung Debit Caudal Portata		Pressure Druck Pressione Presion Pressione		r.p.m. u.p.m. t/min. r/min. g/min.	Required Leistung Puissance Potencia Potenza	Weight Poids Gewicht Peso
	l/min	G.P.M. (USA)	bar	p.s.i.		Hp / kW	kg
W5015	15	3.96	500	7250	1450	20 / 14.70	19.5
W4518	18	4.75	450	6525		21 / 15.44	
W4015	15	3.96	400	5800		15 / 11.02	
W4018	18	4.75	400	5800		20 / 14.70	
W3521	21	5.55	350	5075			
W3523	23	6.07	350	5075			
T4018	18	4.75	400	5800	1750		



series "66 H.P."

DIS. COD. 66.9501.00

PISTON - PISTONE Ø 16		PISTON - PISTONE Ø 18	
MODEL: W5015 - W4518 - W4015 - W4018 T4018		MODEL: W3521 - W3523	
KIT 174	KIT 175	KIT 180	KIT 176
54-56	52-53-54-55-56	54-56	52-53-54-55-56
3	1	3	1

STANDARD
VERSION

W5015 - W4518 - W4015 W4018 - W3521 - W3523 T4018

KIT	KIT 2	KIT 3	KIT 150
Positions included	61	48	8-9-10 11-12 (7)
Posizioni include			
N. pos.	3	2	6

POS.	CODE CODICE	DESCRIPTION DESCRIZIONE	N. PCS.
1	66.1210.41	Testata pompa (pistone Ø 16)	1
	66.1211.41	Testata pompa (pistone Ø 18)	1
	66.1240.41	Testata pompa (pistone Ø 16) W5015-W4518	1
2	96.7104.00	Rosetta Ø 10 Schnorr	8
3	99.3820.00	Vite M 10x120 UNI 5931 Zincata	8
4	90.5118.00	Anello antiestrusione Ø 19,5x22x1,5	3
5	90.3596.00	OR Ø 18,77x1,78	3
6	66.2102.70	Distanziale	3
7	36.7121.01	Gruppo valvola	KIT 150 6
8	90.3841.00	OR Ø 17,13x2,62	KIT 150 6
9	36.2003.66	Sede valvola	KIT 150 6
10	36.2032.66	Valvola	KIT 150 6
11	94.7376.00	Molla Ø 9,4x14,8	KIT 150 6
12	36.2025.51	Guida valvola	KIT 150 6
13	90.5115.00	Anello antiestrusione Ø 18,7x23x1,5	3
14	90.3843.00	OR Ø 17,86x2,62	3
15	66.2101.66	Bussola	3
16	90.3857.00	OR Ø 23,81x2,62	6
17	66.2100.70	Tappo Ø 29	3
18	90.5165.00	Anello antiestrusione Ø 24,7x29x1,5	3
19	66.1301.41	Tappo valvole M 32x1,5x18,5	3
20	99.3069.00	Vite M 8x25 UNI 5931 Zincata	4
21	66.1502.74	Coperchio	1
22	44.2118.01	Distanziale con indicatore	1
23	90.4097.00	OR Ø 55,56x3,53	1
24	66.1501.22	Coperchio laterale carter	1
25	90.3913.00	OR Ø 67,95x2,62	2
26	91.8380.00	Cuscinetto a rulli NJ 2206 EC	2
27	66.0100.22	Carter	1
28	98.2106.00	Tappo carico olio G 3/8	1
29	66.0200.35	Albero W5015 - W4015 - W3521 - T4018	1
	66.0204.35	Albero W4518 - W4018 - W3523	1
30	91.4892.00	Linguetta	1
31	66.0300.01	Biellea completa	3
32	90.3922.00	OR Ø 133,02x2,62	1
33	66.1600.22	Coperchio posteriore	1

POS.	CODE CODICE	DESCRIPTION DESCRIZIONE	N. PCS.
34	99.1884.00	Vite M 6x20 UNI 5931 Zincata	4
35	90.4051.00	OR Ø 26,58x3,53	1
36	63.2100.51	Spia livello olio	1
37	98.2041.00	Tappo G 1/4"x9	1
38	90.3585.00	OR Ø 10,82x1,78	1
39	99.3099.00	Vite M8x35 UNI 5931 Zincata	6
40	96.7014.00	Rosetta Ø 8 Schnorr	6
41	97.7405.00	Spinotto Ø 14x39	3
42	66.0500.64	Guida pistone	3
43	96.7101.00	Rosetta Ø 10x28x0,5	3
	66.0402.09	Pistone Ø 16x54	3
44	66.0403.09	Pistone Ø 18x54	3
45	90.3584.00	OR Ø 10,82x1,78-90 Sh.	3
46	66.2195.66	Vite fissaggio pistone	3
47	66.1500.22	Coperchio laterale carter	1
48	90.1648.00	Anello radiale Ø 30x55x7	KIT 3 1
49	99.3039.00	Vite M 8x16 UNI 5931 Zincata	4
50	98.2100.00	Tappo G 3/8"x13	2
51	90.3833.00	OR Ø 13,95x2,62	1
52	66.0802.70	Anello di fondo Ø 16	KIT 175 3
	66.0803.70	Anello di fondo Ø 18	KIT 176 3
53	90.3616.00	OR Ø 34,65x1,78	KIT 175-176 3
	90.2631.00	Anello di tenuta Ø 16x24x6,5 L.P. seal	KIT 174-175 3
54	90.2652.00	Anello di tenuta Ø 18x26x6,5 L.P. seal	KIT 180-176 3
	66.2162.70	Anello intermedio Ø 16	KIT 175 3
55	66.2163.70	Anello intermedio Ø 18	KIT 176 3
	90.2634.00	Anello di tenuta Ø 16x26x9,5 H.P. seal	KIT 174-175 3
56	90.2655.00	Anello di tenuta Ø 18x28x10 H.P. seal	KIT 180-176 3
57	47.2000.74	Piedino fissaggio pompa	2
58	96.7106.00	Rosetta Ø 10 DIN 7980	4
59	99.3644.00	Vite M 10x18 UNI 5931 Zincata	4
60	90.9126.00	Boccola Ø 22x25x30	3
61	90.1625.00	Anello radiale Ø 22x32x5,5	KIT 2 3
62	96.7380.00	Rosetta Ø 17,5x23x1,5	1
63	96.7514.00	Rosetta Ø 21,5x27x1,5	1
64	98.2176.00	Tappo G 1/2"x10	1